

4.3" TFT彩屏长度超出PCB范围，仅供测试

4.0

开山斧

MCU 开山之作 Ai8051U核心功能实验板
分销商电话: 0513-55012928、89896509

3.5

3.2

2.8

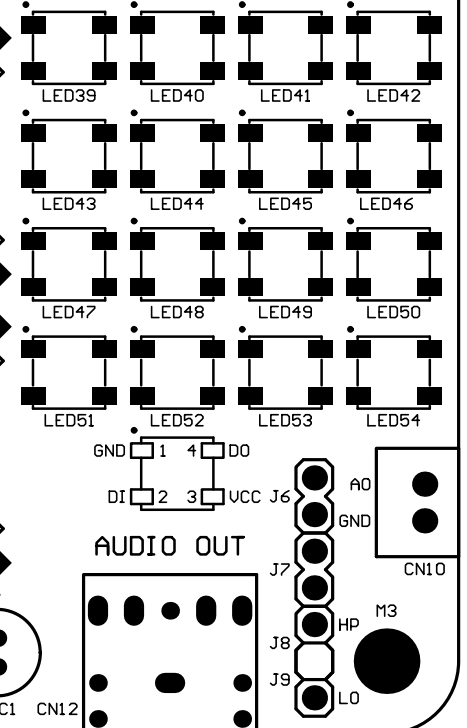
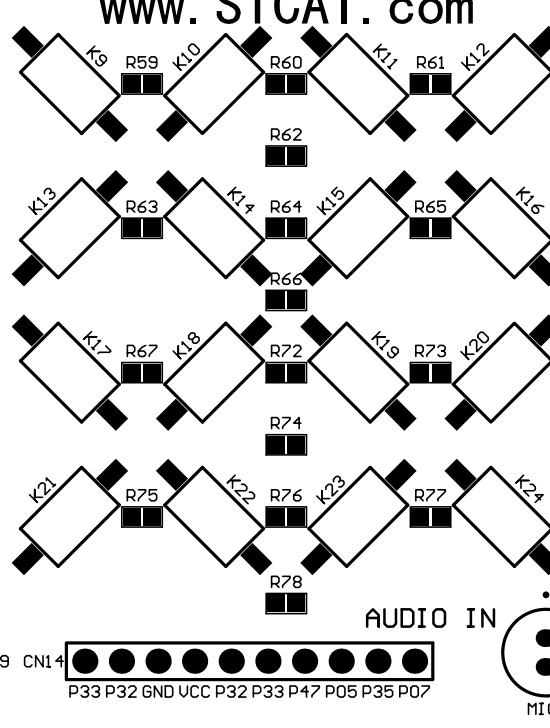
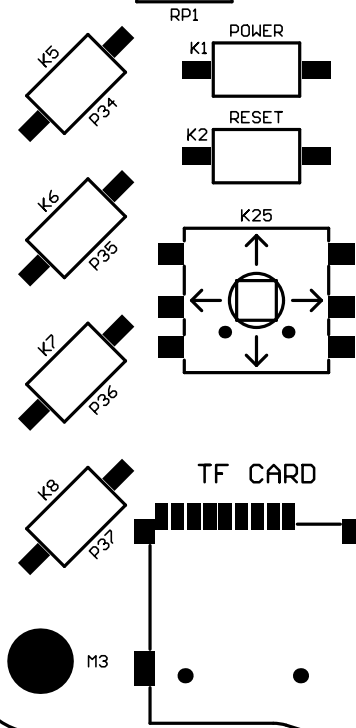
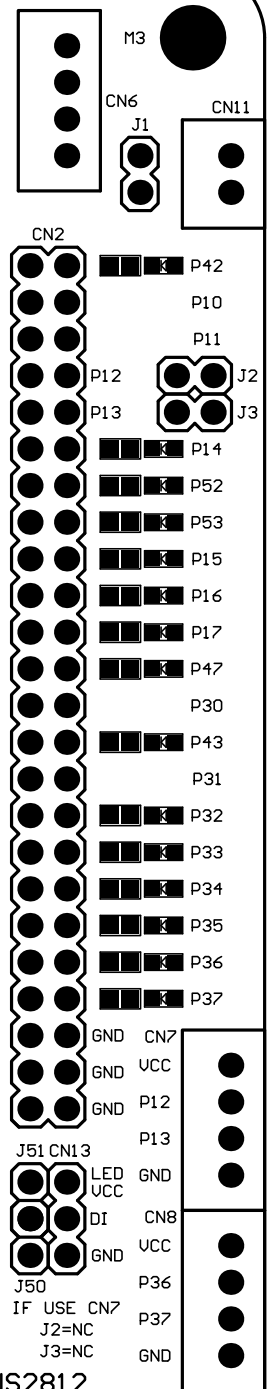
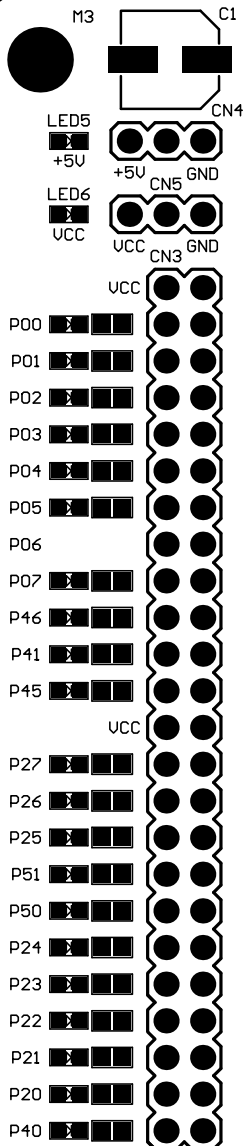
2.4

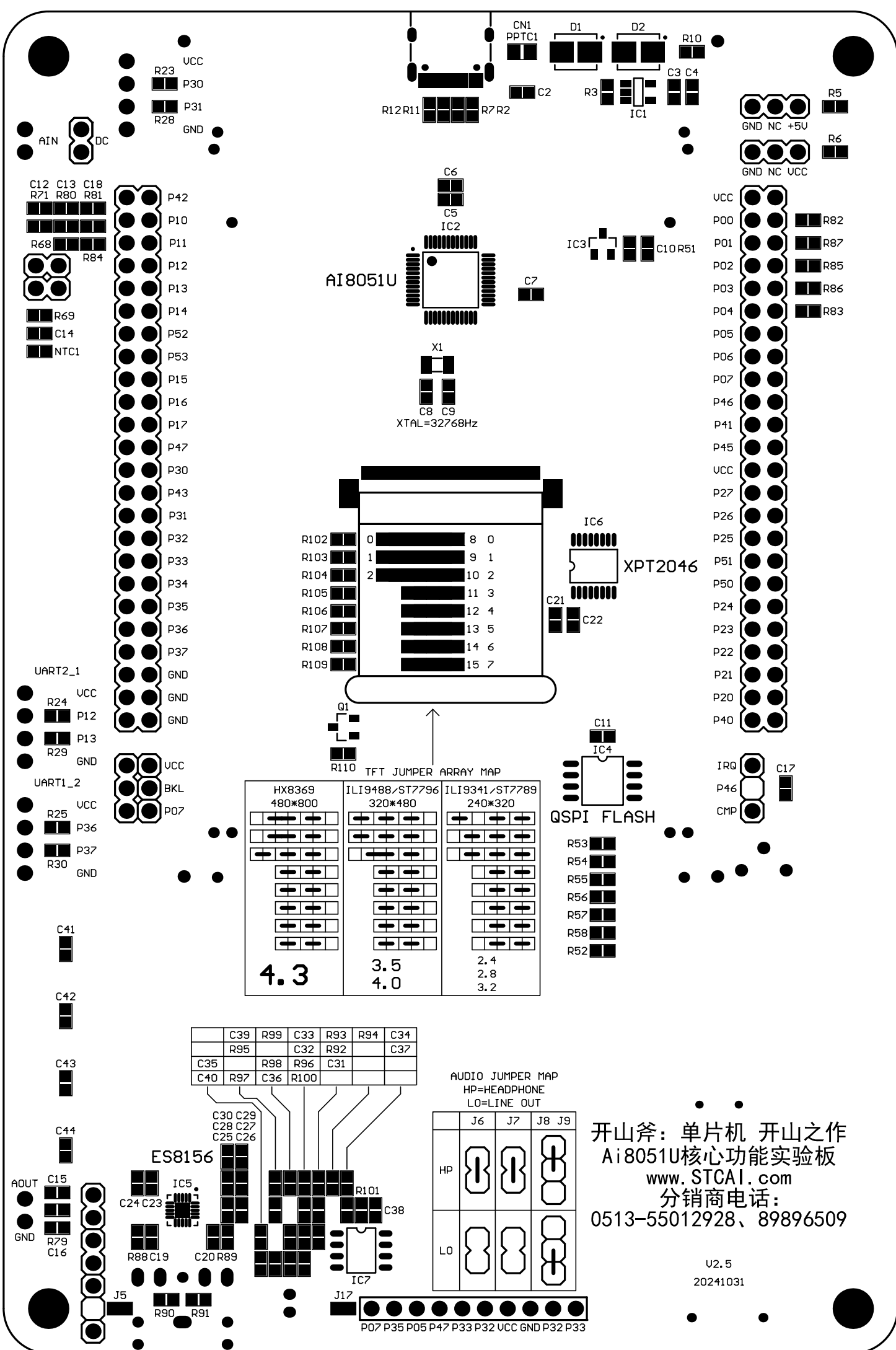
ILI9341/ST7789 240*320

ILI9488/ST7796 320*480

www.STCAI.com

WS2812





开山斧：单片机 开山之作
Ai8051U核心功能实验板
www.STCAI.com
分销商电话：
0513-55012928、89896509

U2.5
20241031