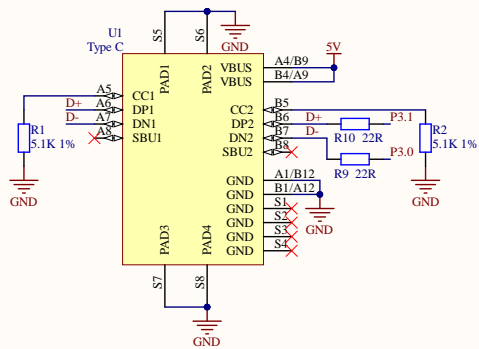
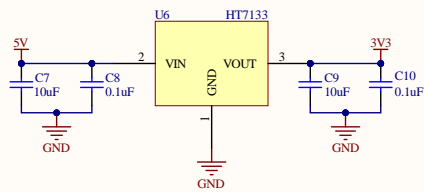


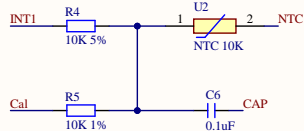
## Type C输入



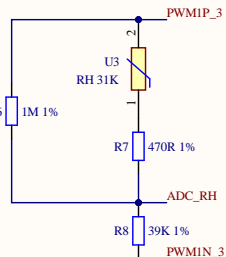
## 5V转3V3



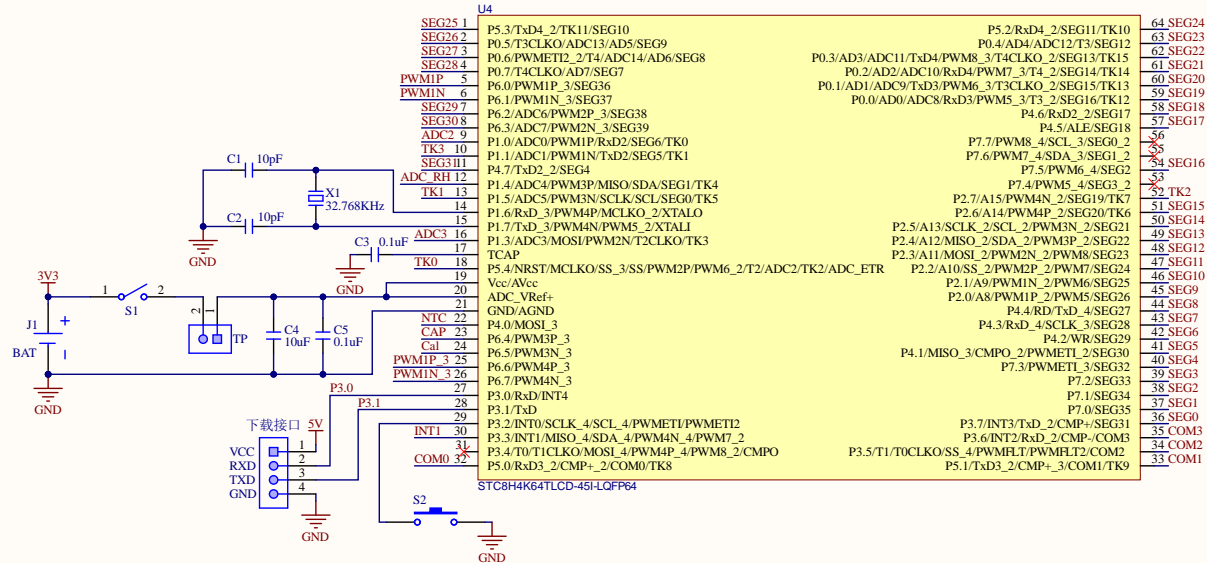
## NTC热敏电阻



## 湿度传感器

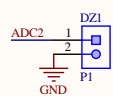


# 单片机

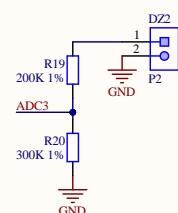


## 60个可用IO

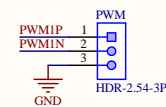
模拟信号输入(3.3V MAX.)



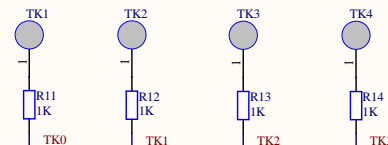
模拟信号输入(5V MAX.)



## 互补PWM



## 触摸按键



## 段码屏

US		
SEG0	1	
SEG1	2	SEG0 COM3
SEG2	3	SEG1 COM2
SEG3	4	SEG2 COM0
SEG4	5	SEG3 COM1
SEG5	6	SEG4 COM3
SEG6	7	SEG5 COM0
SEG7	8	SEG6 COM2
SEG8	9	SEG7 COM1
SEG9	10	SEG8 COM3
SEG10	11	SEG9 COM0
SEG11	12	SEG10 COM2
SEG12	13	SEG11 COM1
SEG13	14	SEG12 COM3
SEG14	15	SEG13 COM0
SEG15	16	SEG14 COM2
SEG16	17	SEG15 COM1
SEG17	18	SEG16 COM3

LCD7X18

Title
-------

Size
A3

Number
--------

Revision

Date: 3/07/2025

Sheet of

--	--